



## Software That Fits

AccountMate Business Intelligence provides dynamic insight into your business by providing real-time analysis and reporting capabilities.

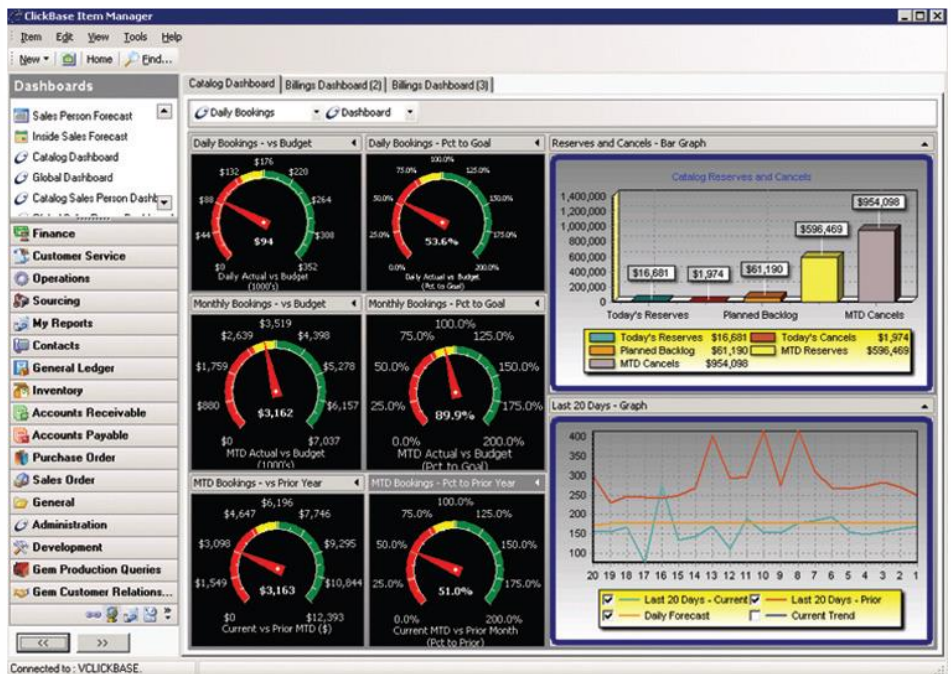
AccountMate Business Intelligence enables you to visually analyze your business data, track key performance indicators and distribute information throughout your organization, while providing an optimized platform for management and operational reporting.

Immediately available upon installation, AccountMate Business Intelligence provides access to your business data through a number of predefined reports, objects, key performance indicators and queries.

## AccountMate 10 for SQL or Express Business Intelligence Module

Get the information you need, **exactly** how you need it to effectively run your business by using the AccountMate Business Intelligence Module. **Integrate** from multiple sources and multiple formats, blending information from across your organization and even from external sources. **Manage** with an interface truly designed to be used by business people, not IT technicians. **Analyze** with dynamic 'slice and dice' and real-time, drill-down capabilities to leverage your data and to report what matters to your department, division or region. **Present** through reports, charts, graphs and dashboards which work best for you.

AccountMate Business Intelligence provides dozens of built-in, common reports for Sales, Customer, Item, Vendor, Product Line and Salesperson Analyses, all of which can be customized to any individual's interests and needs. Along with these pre-packaged reports, you can build your own custom reports without relying on expensive programming talent.



*View multiple Key Performance Industries (KPI) screens simultaneously*

### The AccountMate BI Module's key performance indicators include:

- Month-to-month sales comparisons
- Products purchased by customer in a period
- Product by product sales in a period
- Salesperson by salesperson performance in a period
- Customer Sales, Cost and Margin Year-to-Date versus Prior Year-to-Date
- Current inventory levels, orders pending and sales trends

Dashboards put your most important information, in real-time, on your desktop. With “at a glance reporting” and powerful drill-down functionality, the AccountMate BI Module lets you quickly get to the underlying details to identify root causes of problems.

### Increase Agility with Real-Time Access

The AccountMate Business Intelligence Module provides real-time access to any data. You no longer have to build an expensive data warehouse to use business intelligence to make better informed business decisions.

### Connect Across the Organization and Across Multiple Databases

With the AccountMate Business Intelligence Module, you have seamless integration tools. You can retrieve information from any ODBC compliant database, combine and analyze information across multiple databases and present any of it in the format that meets your unique needs. Now, you can manage, search and relate heterogeneous data from sources like Microsoft Word documents, Excel spreadsheets, customer service incident reports, email...just about **any** database source!

### Truly Empower Users

Bringing new meaning to the term “ease of use”, the AccountMate Business Intelligence Module allows operational and management personnel to point, click, drag and drop to generate meaningful charts and graphs. With just two hours of training, your team will be creating reports and OLAP cubes giving everyone valuable insight into your organization’s transactions and results.

### Information Anytime, Anywhere

The AccountMate Business Intelligence Module provides secure communications via TCP/IP to allow users real-time access to

information from anywhere, whether it’s sitting on a desktop computer in an office or somewhere on the Internet.

### Data-driven Report Writing

Distribution of report files to workstations is a thing of the past. With the AccountMate Business Intelligence Module, everything is **data-driven**. Reports, graphs and dashboards can be published simply by giving users and user groups access. No transfer of files. No installations.

### One Database, Two Databases, Three Databases, Four...

Is all of your information in one database or scattered across multiple applications? That’s not a problem with the AccountMate Business Intelligence Module. With the cross-database tool, information from difference sources can be seamlessly merged with your AccountMate data to provide a centralized view of your entire organization, all in real-time.

### Reduce, Recycle, and Reuse

Reduce the time it takes to build and publish reports, graphs, and cubes. Use existing views to create new views with a completely different meaning. The AccountMate Business Intelligence Module design lets you reuse queries repeatedly to present information in different formats.

### Lightning Fast Development

Traditional report writers can be tedious and time-consuming. The AccountMate Business Intelligent Module provides a simple, graphical interface for assembling reports, graphs, cubes, and dashboards so that your development time can be minutes instead of hours or days.

## AccountMate Software Corporation

1445 Technology Lane | Suite A5 | Petaluma, California 94954 | USA  
800-877-8896 | 707-774-7500 | [www.accountmate.com](http://www.accountmate.com)

## Software That Fits